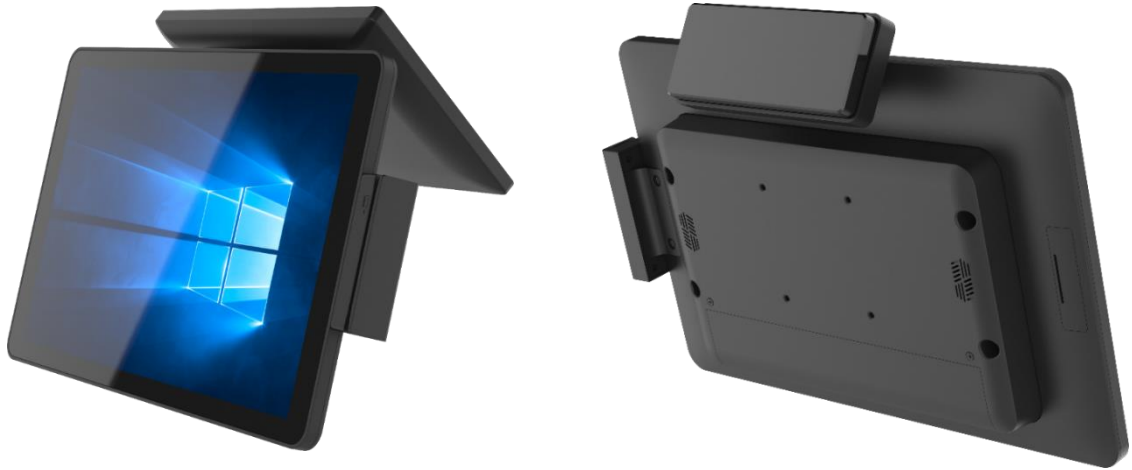


15.6" All in One SPOS

MR1N RK3568

- ◇ Robust All-in-One POS terminal integrated with a wide variety of peripherals.
- ◇ Panel PC structure design to save Total Logistics Cost (TLC).
- ◇ Standard VESA holes to support various stands.
- ◇ Easily upgrade memory and storage by removing 4 screws.
- ◇ Android System

Features



TYPE A



TYPE B



TYPE D+



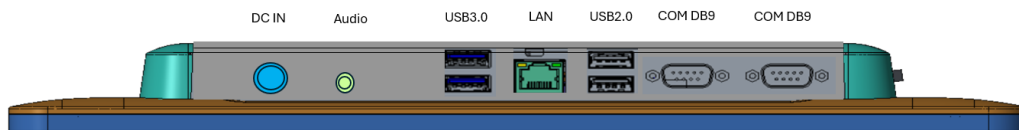
TYPE E

Various stands support

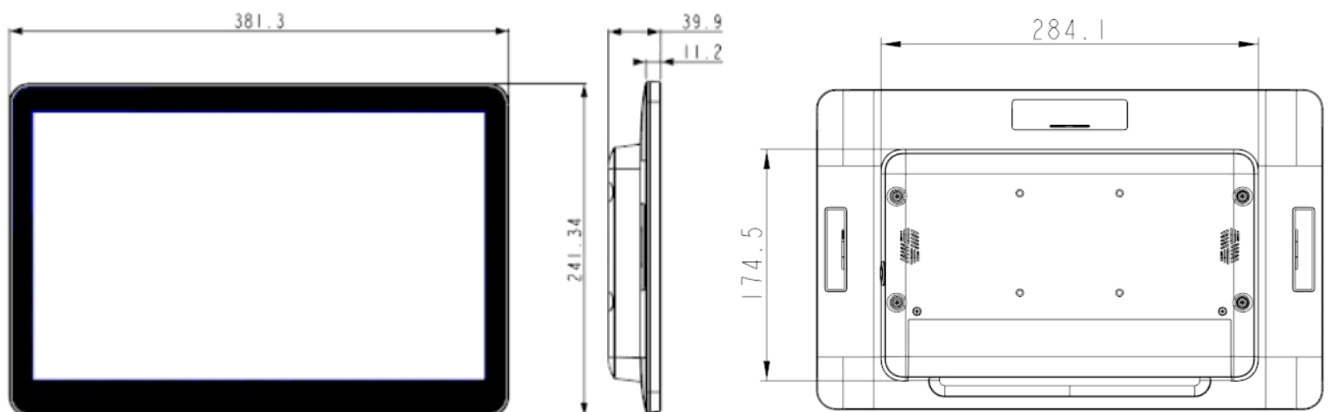
Product Specifications (MR1N)

Touch Panel	PCT	PCT (Projected Capacitive Touch) Support 10 points Multi-Touch	
LCD Panel	15.6"	15.6" FHD 1920 x 1080 (300 nits)	
CPU	FCBGA	Rockchip RK3568	
Memory	RAM	On board DDR4 2G/ 4G	
Storage	eMMC	On board 32G/ 64G	
Interface	Power Input	DC12V (Power Jack 4 pin with Lock)	
	Audio Connector	3.5 mm audio jack x 1	
	USB	USB 2.0 x 2 , USB3.0 x 2	
		Option Internal USB 2.0 x 4 (2 x 9 pin header)	
	COM	Powered COM1 : 5V/12V and COM2 : RS232/485 selectable by jumper settings	
	Display	HDMI x 1 (Option)	
	LAN	Giga LAN x 1	
Other	Power Switch	Power On / Off switch x 1	
	AC Adaptor	12V	
	VESA Holes	75 x 75 mm	
	Operating Temperature	0 ~ 40 °C (32 ~ 104 °F)	
	Storage Temperature	-20 ~ 60 °C (-4 ~ 140 °F)	
	Dimension	381(W) x 39.9 (D) x 241.3 (H) mm / 15 (W) x 1.6 (D) x 9.5 (H) inch	
	Weight w/o VESA Stand	G.W. 3.6 Kg / 7.9 lbs ; N.W. 2.6 Kg / 5.73 lbs	
	Accessories	Optional MSR , 10.1" 2nd display / USB interface Peripherals	
	Regulation	CE , FCC & LVD	

I/O Interface (MR1N)



Dimensions (mm)



All information contained in this document is subject to change without prior notice.